



ESRC Business and Local Government
Data Research Centre

Drawing Insights from Data for Policy & Decision Support

Prof Maria Fasli

Director, UNESCO Chair in Analytics and Data Science

12th February 2019

www.BLGdataresearch.org
[@BLGDataResearch](https://twitter.com/BLGDataResearch)



We live in extraordinary times



ESRC Business and Local Government
Data Research Centre

www.BLGdataresearch.org
[@BLGDataResearch](https://twitter.com/BLGDataResearch)

Big changes in too little a time



St Peter's Square 2005



Data, Information, Knowledge



(BIG) DATA ≠ (BIG) KNOWLEDGE



ESRC Business and Local Government
Data Research Centre

www.BLGdataresearch.org
@BLGDataResearch

Value

**KNOWLEDGE;
INSIGHTS;
DECISIONS - ACTIONS**

Capture

Analysis

Modelling

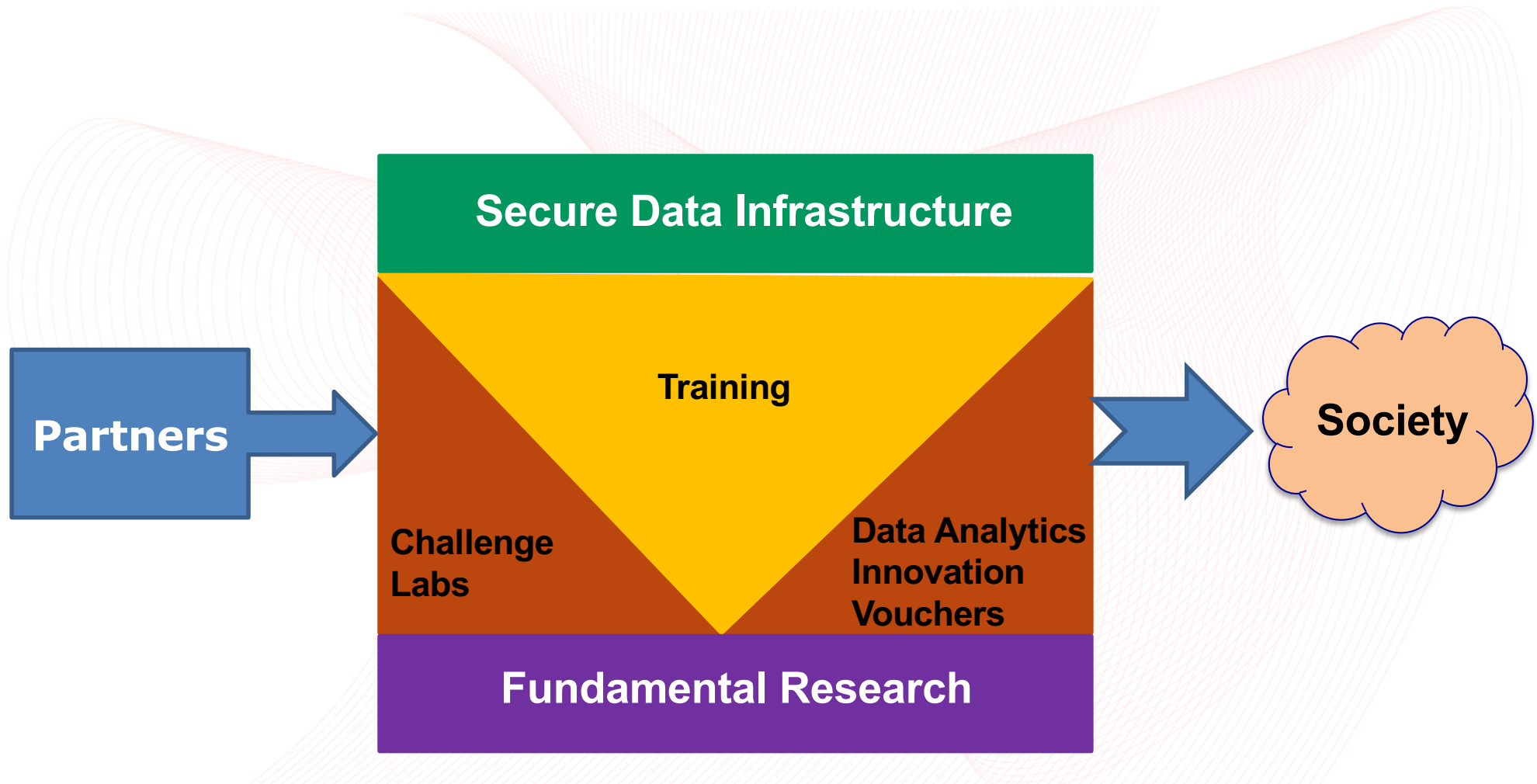


Challenges

- Organisations of any size, face a number of challenges
 - Bamboozled by terminology & hype
 - Lack of understanding of technologies
 - Lack of understanding of own data needs
 - Lack of skills



Business and Local Government Data Research Centre



Research

- Local Economic Growth
- Supporting Vulnerable People
- Mapping Green Infrastructures
- New methodologies for Big Data and AI



Local Economic Growth

- SMEs are the lifeblood of many small towns/cities and are crucial to productivity
- But there are severe funding gaps
- UK is world leading crowdfunding market

Commercial crowdfunding

P2P lending

Medium term loans 1-5 yrs
Older SMEs 9-10 years
Funding Circle

Invoice finance

Short term loans <1 yr
Accounting software
MarketInvoice

Equity Crowdfunding

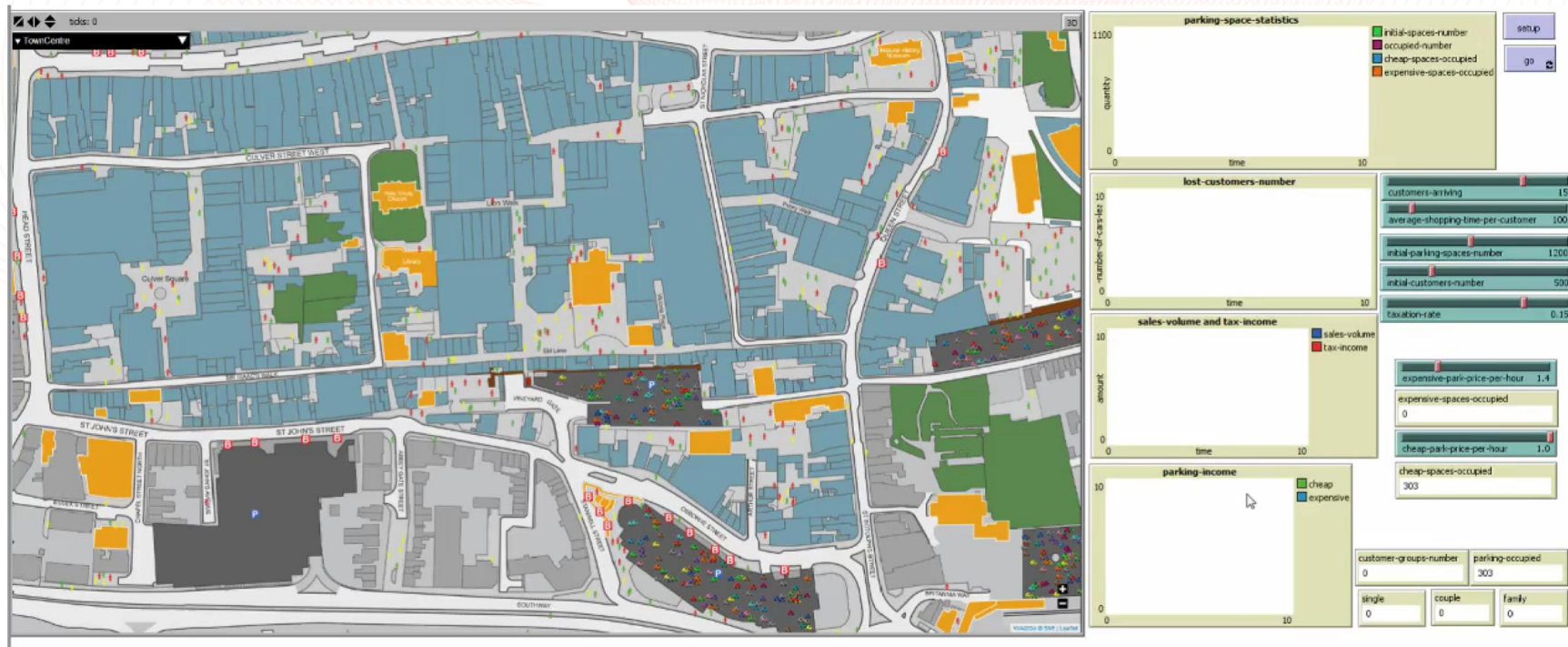
Long term investment for startups (2-3 years old)

Crowdcube, Seedrs, SyndicateRoom leading platforms



Local Economic Growth

- Understanding interactions in the High Street



Support for Vulnerable People



Support for Vulnerable People

LAs can use age at entry to care to anticipate numbers of long term care placements they will need to provide



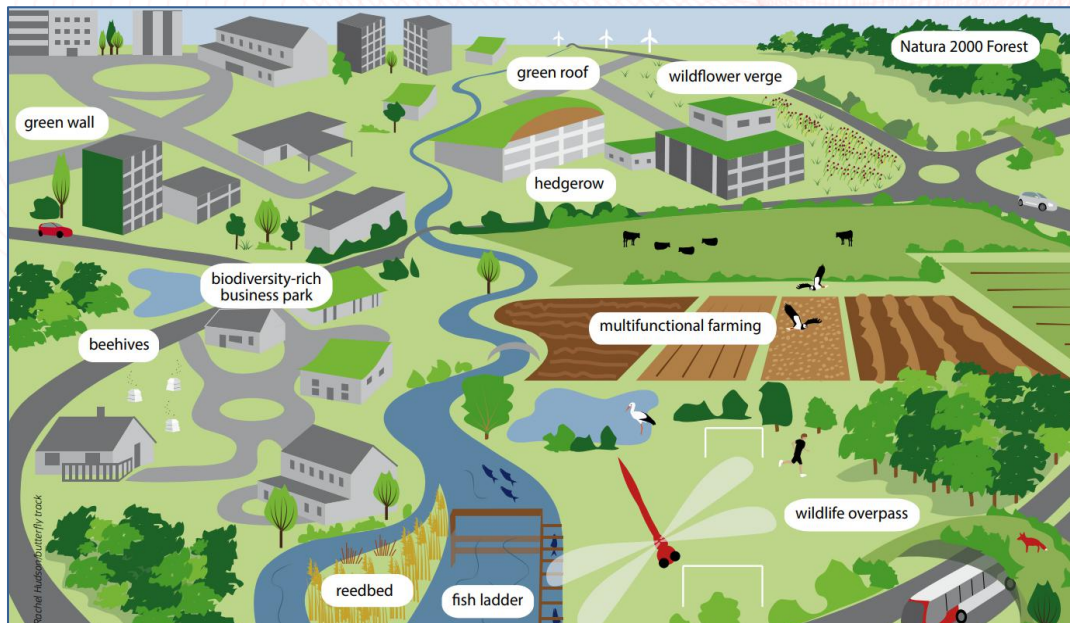
Councils can target resources on tenants who are at most risk of rent arrears, alleged anti-social behaviour or repeated contact with Councils

New measurement for rural deprivation and a composite indicator for identifying deprived rural areas for the purpose of targeting health and care interventions



Mapping Green Infrastructure

Green Infrastructure (GI) is the “network of multifunctional natural and semi-natural features, green spaces, rivers and lakes that intersperse and connect villages, towns and cities and is integral to the quality of life in sustainable communities” Natural England (2009, p.7).



Information on such assets is increasingly important for many planning purposes and the Government **25 Year Environment Plan** explicitly encourages more investment in GI.

Source: European Commission, 2013. Building a Green Infrastructure for Europe.

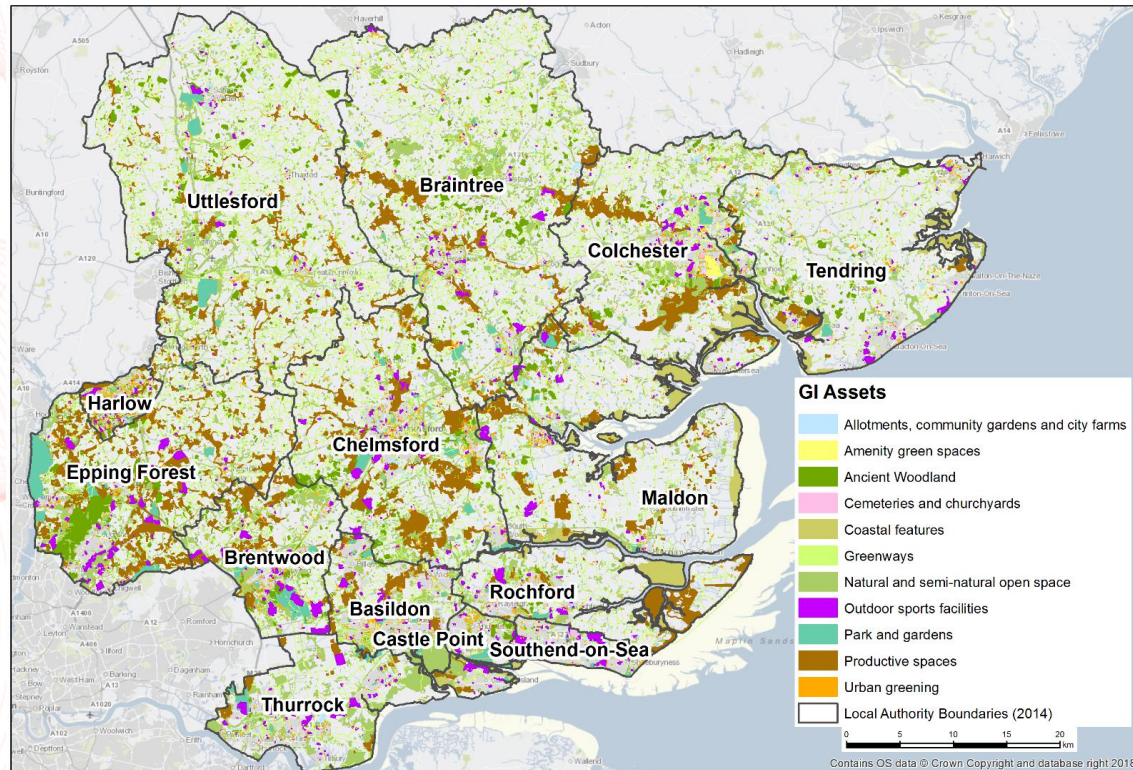


ESRC Business and Local Government
Data Research Centre

www.BLGdataresearch.org
[@BLGDataResearch](https://twitter.com/BLGDataResearch)

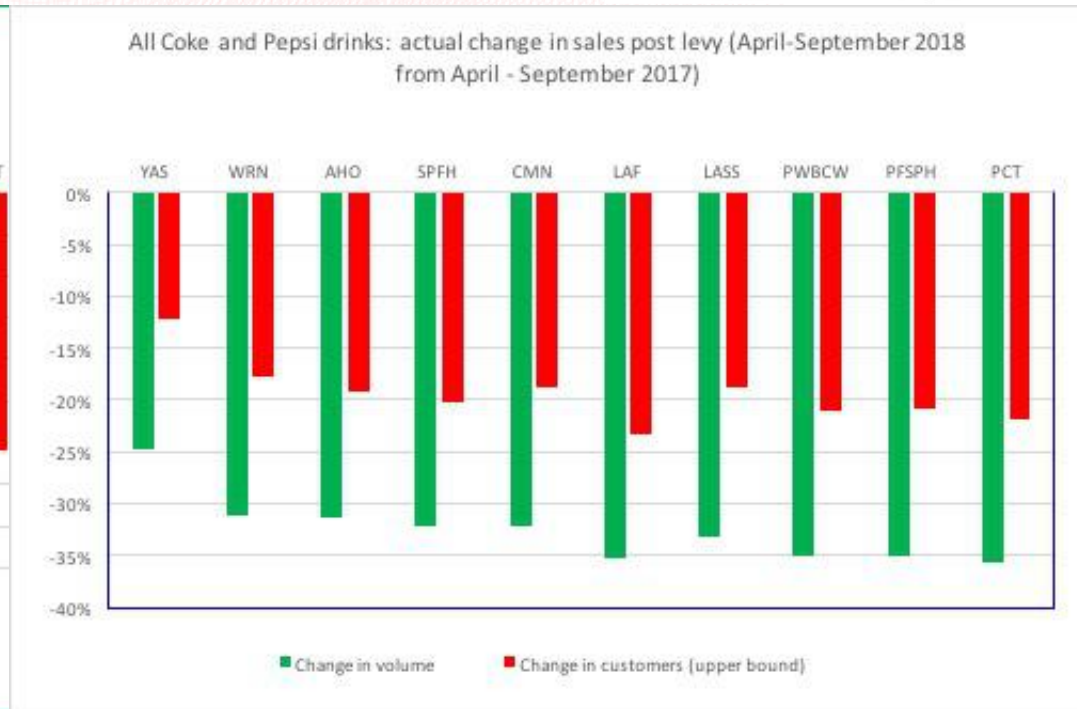
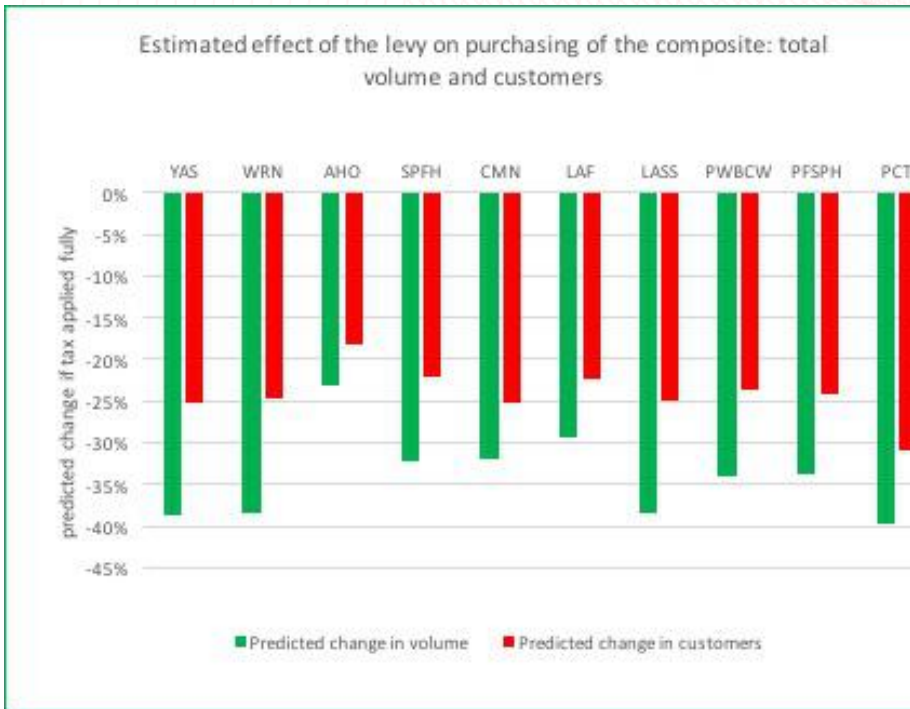
Mapping Green Infrastructure

There is no single dataset that includes all types of GI so BLGDRC researchers at UEA have been investigating methods of combining spatial data sources to map GI over counties or larger regions. For example, this work is currently informing the development of a GI Strategy for Essex.



Methodologies for Big Data and AI

- The impact of "sugar tax" on consumer behaviour



Methodologies for Big Data and AI

The risk of death after a heart attack is lower than previously thought, and more widespread prescription of beta blockers could further improve survival rates



Modified Pilates classes for women suffering from incontinence as addition to standard physiotherapy can help



How we can help

- Bring together academics and policymakers to tackle difficult challenges
- Inform more effective policy decisions and sustainable planning
- Use predictive analytics to improve services and lives
- Help measure and demonstrate better value for money
- Provide analytics training to enhance skills



Going Forward

- BLG DRC has been granted another 3 years of funding
- Working closely with our Partners Essex County Council and Essex Police
- Looking to extend collaborations and work nationally and internationally working with researchers in Singapore, USA, China



Contact us

Business and Local Government Data Research Centre (BLG DRC)

Parkside 2C

University of Essex

Wivenhoe Park

Colchester CO4 3SQ UK

Email: BLGdataresearch@essex.ac.uk

